

Natalie Mossin Architect MAA
Head of Institute, Institute of Architecture and Technology, KADK
Co-Chair, UIA Commission on Sustainable Development
Chief Editor, "An Architecture Guide to the UN 17 Sustainable Development Goals"



Architecture as messenger in a time of emptied public space

The Arne Jacobsen SAS Hotel in Copenhagen, photo: Helena Gonzales

COVID-19

Take action with
us in cities and
communities

UN HABITAT
FOR A BETTER URBAN FUTURE

COVID-19
RESPONSE

WFP

COVID-19
Take action with us in
cities and communities

WORLD
URBAN
CAMPAIGN



Temporary and repurposed spaces for emergency services

“De Hvide Telte” (white tents) for testing have gone up all over Denmark

COVID-19

Take action with
us in cities and
communities

UN HABITAT
FOR A BETTER URBAN FUTURE

COVID-19
RESPONSE

WFP

COVID-19
Take action with us in
cities and communities

WORLD
URBAN
CAMPAIGN



Spacial organization in the reopening of society

Tape and string, distance and direction; here a government inspiration catalogue for schools and an image from Strandvejsskolen, Copenhagen

COVID-19

Take action with
us in cities and
communities

UN HABITAT
FOR A BETTER URBAN FUTURE

COVID-19
RESPONSE

100
YEARS

COVID-19
Take action with us in
cities and communities

WORLD
URBAN
CAMPAIGN



A new culture of life in public spaces

A pre-corona image like the one on the left, of Sønders Boulevard in Copenhagen by architects SLA, no longer convey livability but risk

COVID-19

Take action with
us in cities and
communities

UN HABITAT
FOR A BETTER URBAN FUTURE

COVID-19
RESPONSE

WFP

COVID-19
Take action with us in
cities and communities

WORLD
URBAN
CAMPAIGN



Future implications

Designing for security at all entries; green spaces as visual space, 8-tallet by BIG; dining in separate cabins, Meyers at the Danish Playhouse; shopping moved on-line, Strøget, the main shopping street in Copenhagen, pre-corona and during the pandemic; the end of the nursing home?

COVID-19

Take action with us in cities and communities

UN HABITAT
FOR A BETTER URBAN FUTURE

COVID-19
RESPONSE

WFP

COVID-19
Take action with us in cities and communities

WORLD URBAN CAMPAIGN

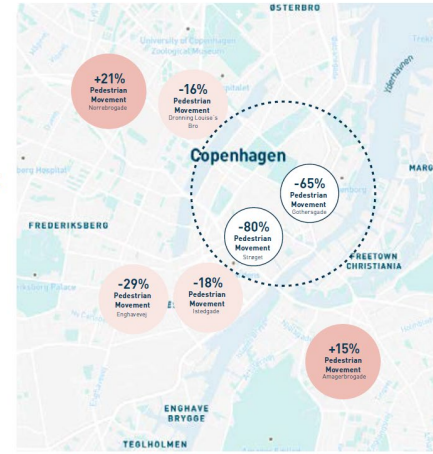


10

Overall mobility has decreased, but **pedestrian movement is increasing** in neighborhoods outside of the city center.



Pedestrian movement decreases the most in the city center, is closer to "normal" at the periphery of the center, and increased in adjacent neighborhoods.



48 Gehl — Making Cities for People

Safe, sustainable and affordable mobility

The “Bicycle Snake” by Dissing+Weitling Architects, findings from the Gehl Architects rapport “Public Space & Public Life during Covid 19”

COVID-19

Take action with us in cities and communities

UN HABITAT FOR A BETTER URBAN FUTURE

COVID-19 RESPONSE

WORLD URBAN CAMPAIGN

COVID-19
Take action with us in cities and communities

WORLD URBAN CAMPAIGN