

URBAN THINKERS CAMPUS

COVID-19 URBAN THINKERS CAMPUS

Series #2

ARCHITECTS' response to **reshaping our cities** that are resilient to pandemic situations

. UIA UN SDG Commission Member . Chairman of Hong Kong Institute of Architects Planning & Urban Design Committee . President of Hong Kong Institute of Urban Design . Deputy Chairman of the Hong Kong Professional Green Building Council . Director of P&T Group . Joel Chan . 11 July 2020 .



DINING PODS

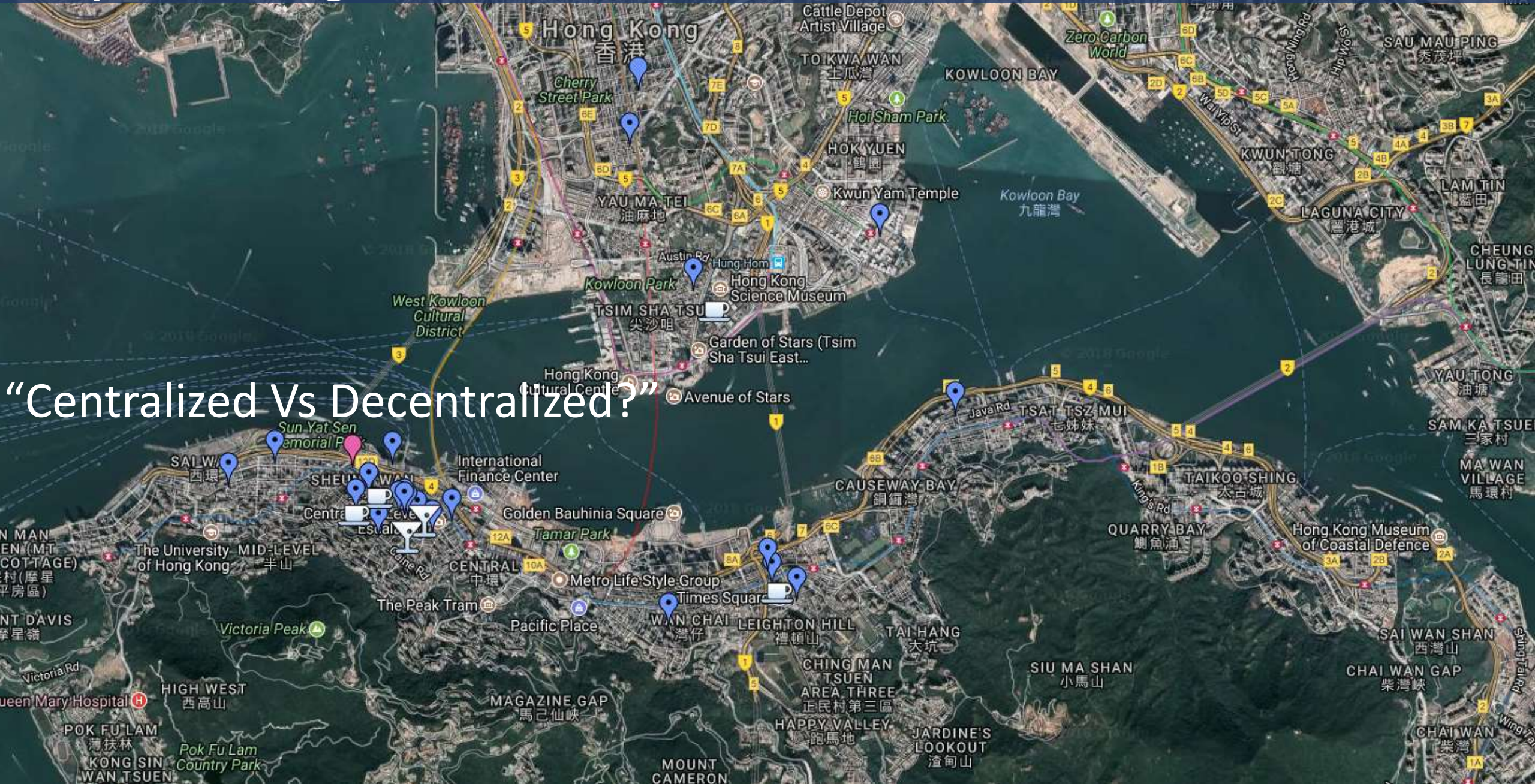
Design of Christophe Gernigon Studio

An aerial photograph of a highly urbanized coastal area, likely a city's Central Business District (CBD). The image shows a dense cluster of skyscrapers and commercial buildings, particularly concentrated along the waterfront. A large body of water, possibly a harbor or bay, is visible, with several ships and boats. The surrounding areas are also densely built up, with a mix of residential and commercial structures. The overall scene depicts a high-density urban environment.

High Density CBD

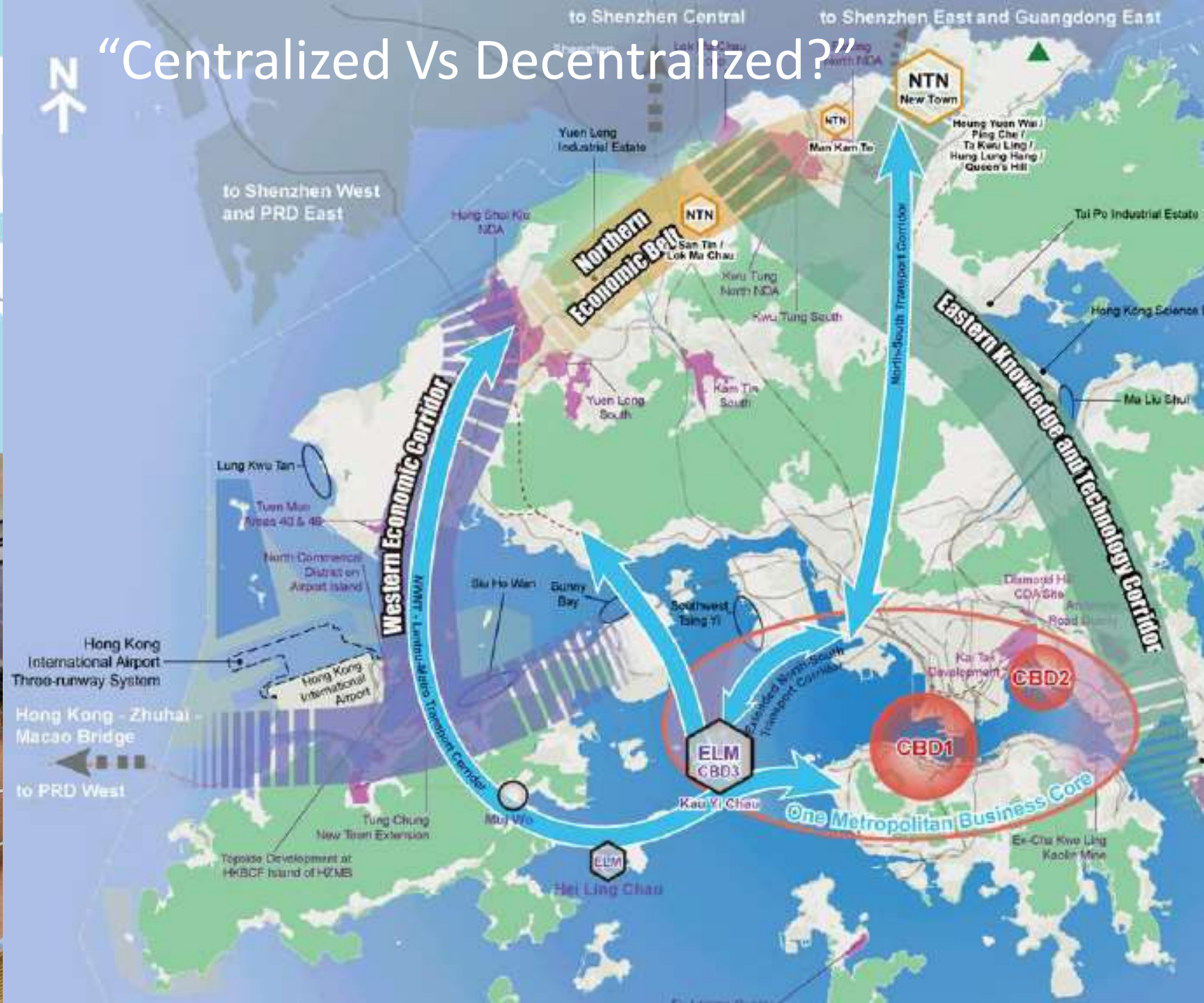
City Planning Scale

“Centralized Vs Decentralized?”





“Centralized Vs Decentralized?”



Commuting

// Travel by themselves – enhance connectivity, alternate transport mode



Source: Internet

Commuting

// Travel by themselves

// Walkability – pleasant to WALK and place to REST



Source: Internet



Source: Internet

“Car - Centric Vs People - Centric ?”

Elderly Care

Hong Kong :

...any age-friendly planning other than “Elderly Home” phenomenon?

Source: Internet

Source: Internet

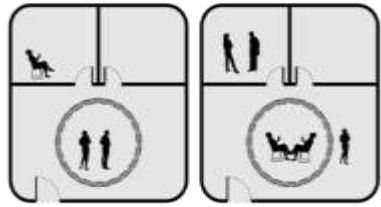


Promote **healthy** city through good **architecture design**



PROMOTE
BETTER
AFFORDABLE
HOUSING
DESIGN

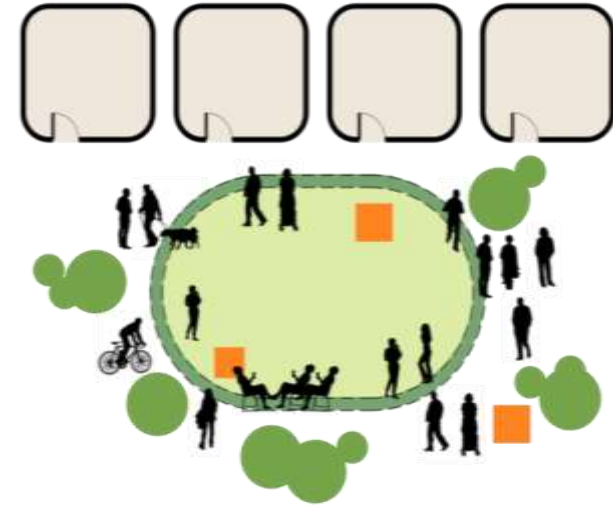




High Land Price



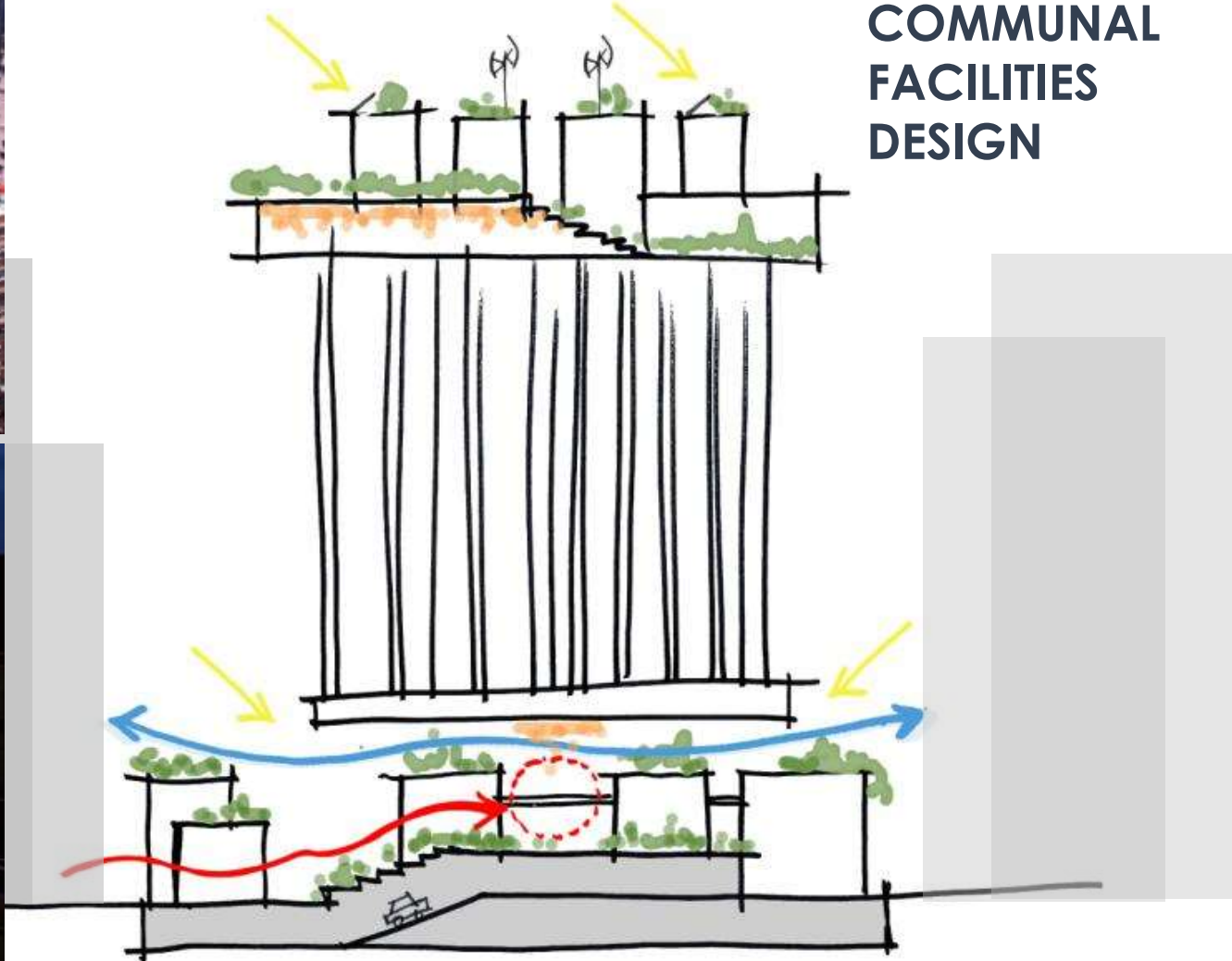
Decrease of Flat Size & Family Size



**'Communal-living' Spaces in City
and Residential Development
become important**

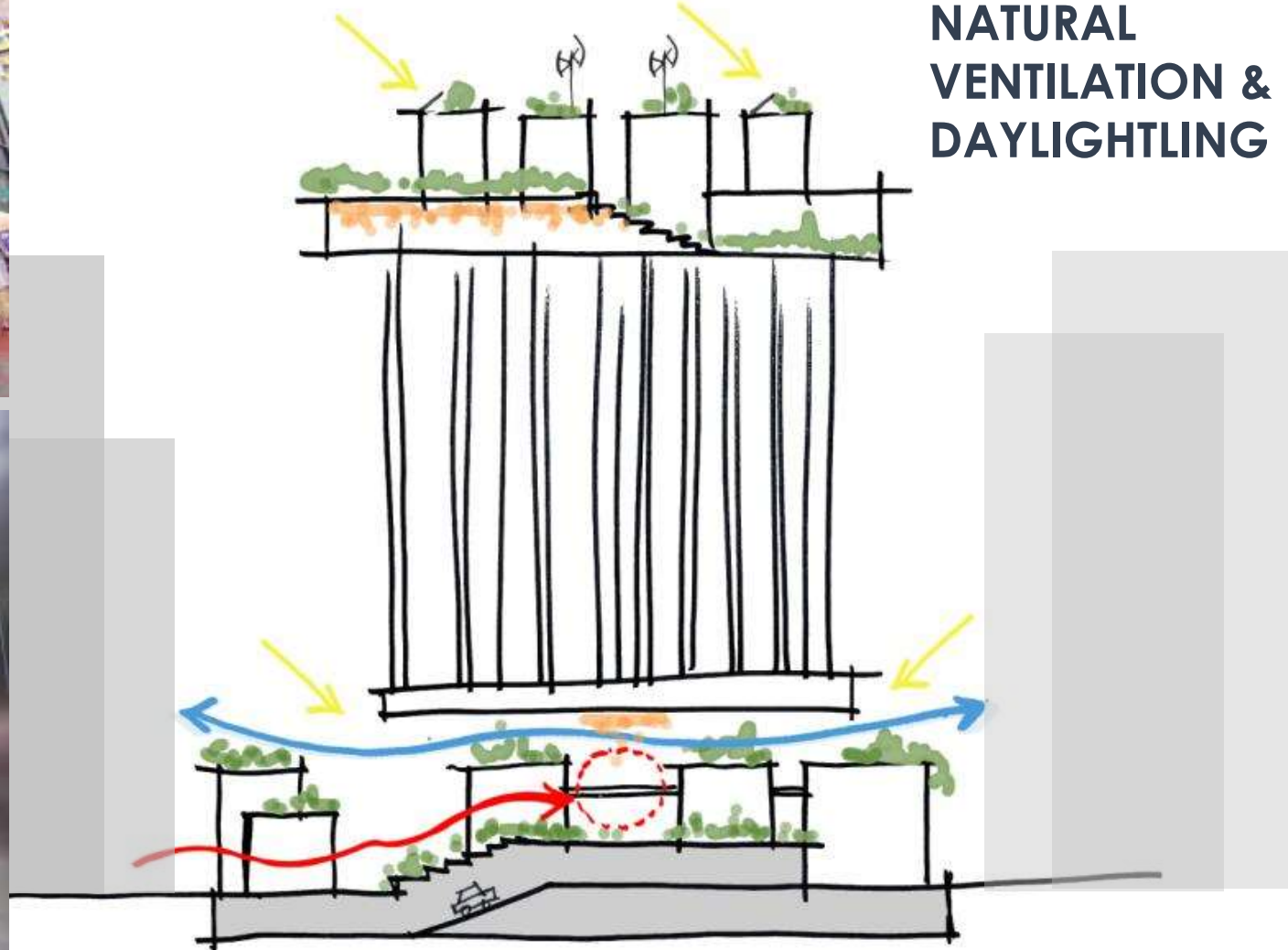


PROMOTE
BETTER
COMMUNAL
FACILITIES
DESIGN





**PROMOTE
BETTER
NATURAL
VENTILATION &
DAYLIGHTING**

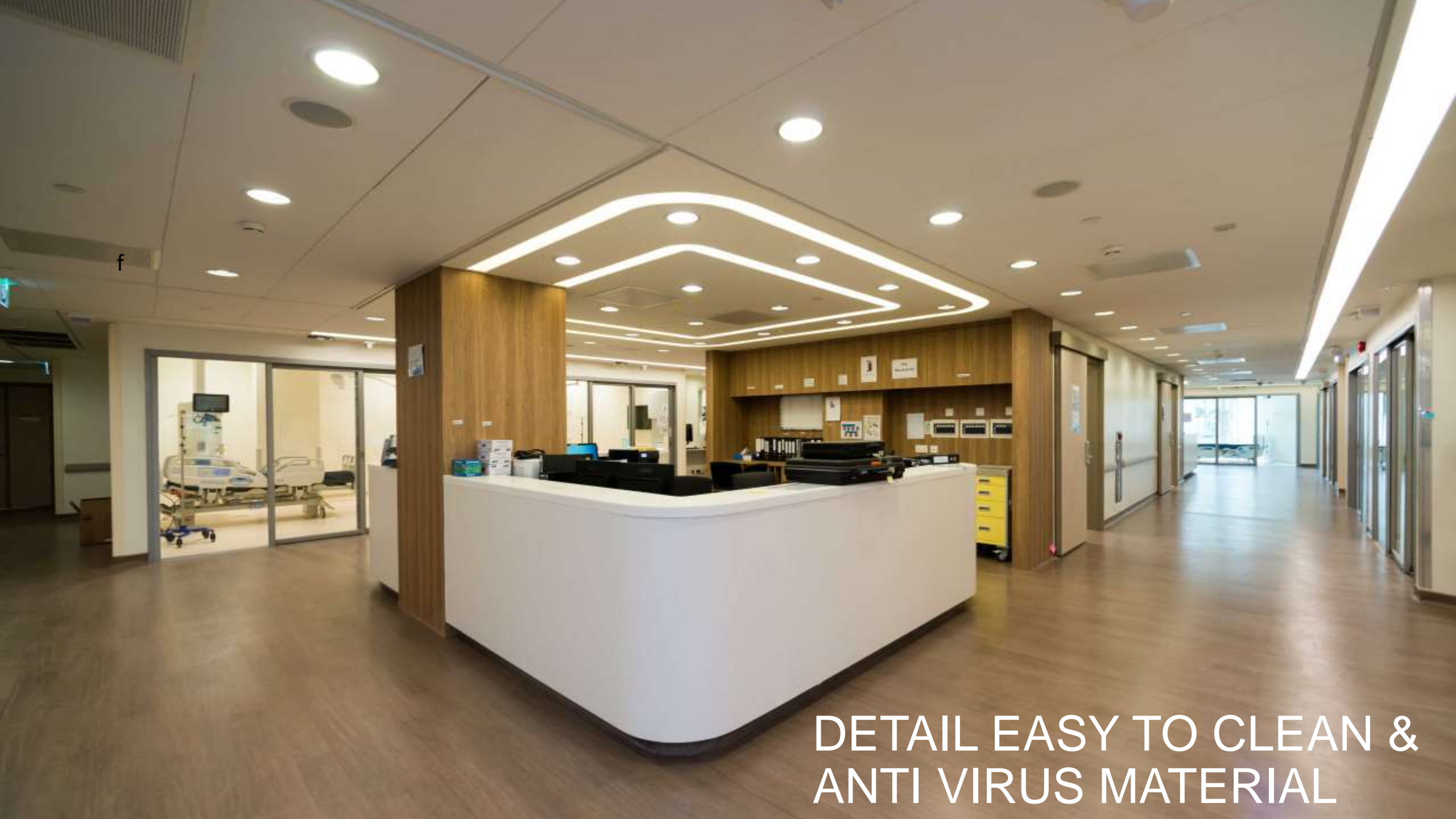


QUARANTINE CAMP RESPONSE TO PANDEMIC



FUTURE PROOF DISASTER, EXPANSION AND CONVERSION READINESS





f

DETAIL EASY TO CLEAN &
ANTI VIRUS MATERIAL

TOUCH-LESS DESIGN



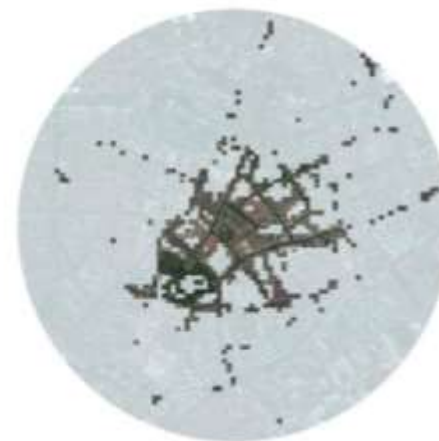
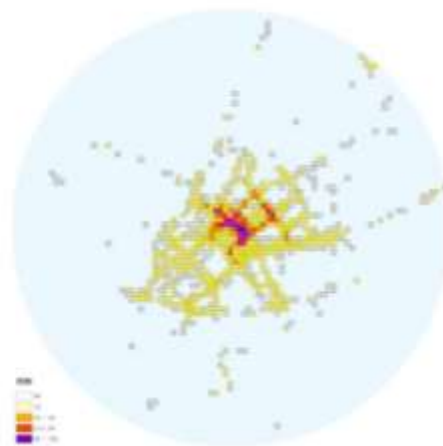


Source: Internet



NEW NORMAL
EQUIPMENT

APPLICATION OF TECHNOLOGY



【绿码】

凭码通行



【黄码】

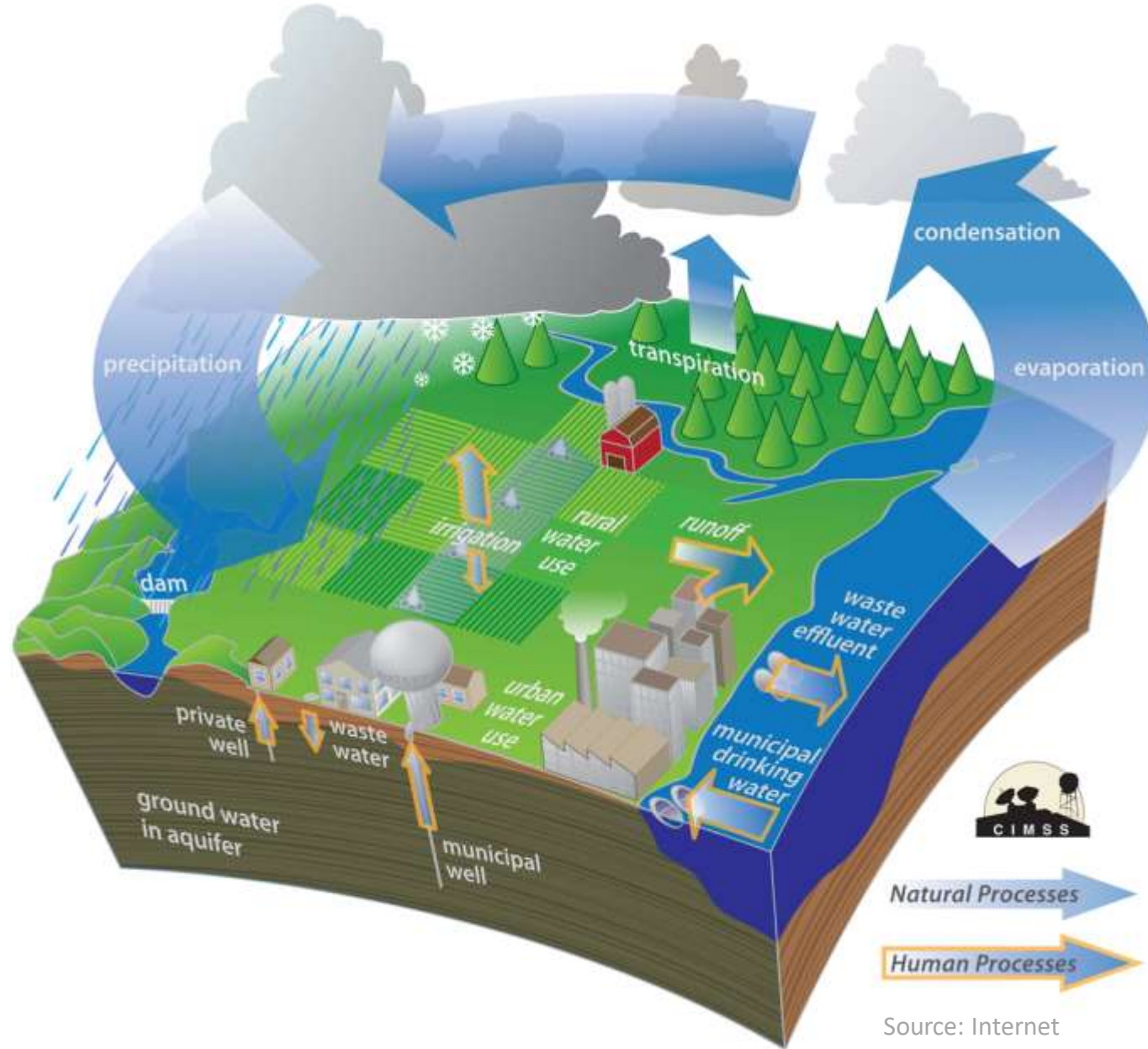
实施7天内隔离，连续
(不超过) 7天健康打卡正常
转为绿码



【红码】

实施14天隔离，连续14天
健康打卡正常转为绿码

Q & A



RETAIN . REDUCE . RECYCLE

Warka Tower

Challenge

In Ethiopia major health problems are caused by the spread of diseases perpetuated by the lack of clean water and sanitation systems. Often contaminated by human and animal waste, water quality is severely poor. The impact of tainted water on the health of communities is significant.

© Warka Water Inc.



Origin/Team
Architecture and Vision:
[Ricardo Villalón], Warka Water Inc.



Photo: Warka Water Inc.

Source: UIA UN SDG Commission